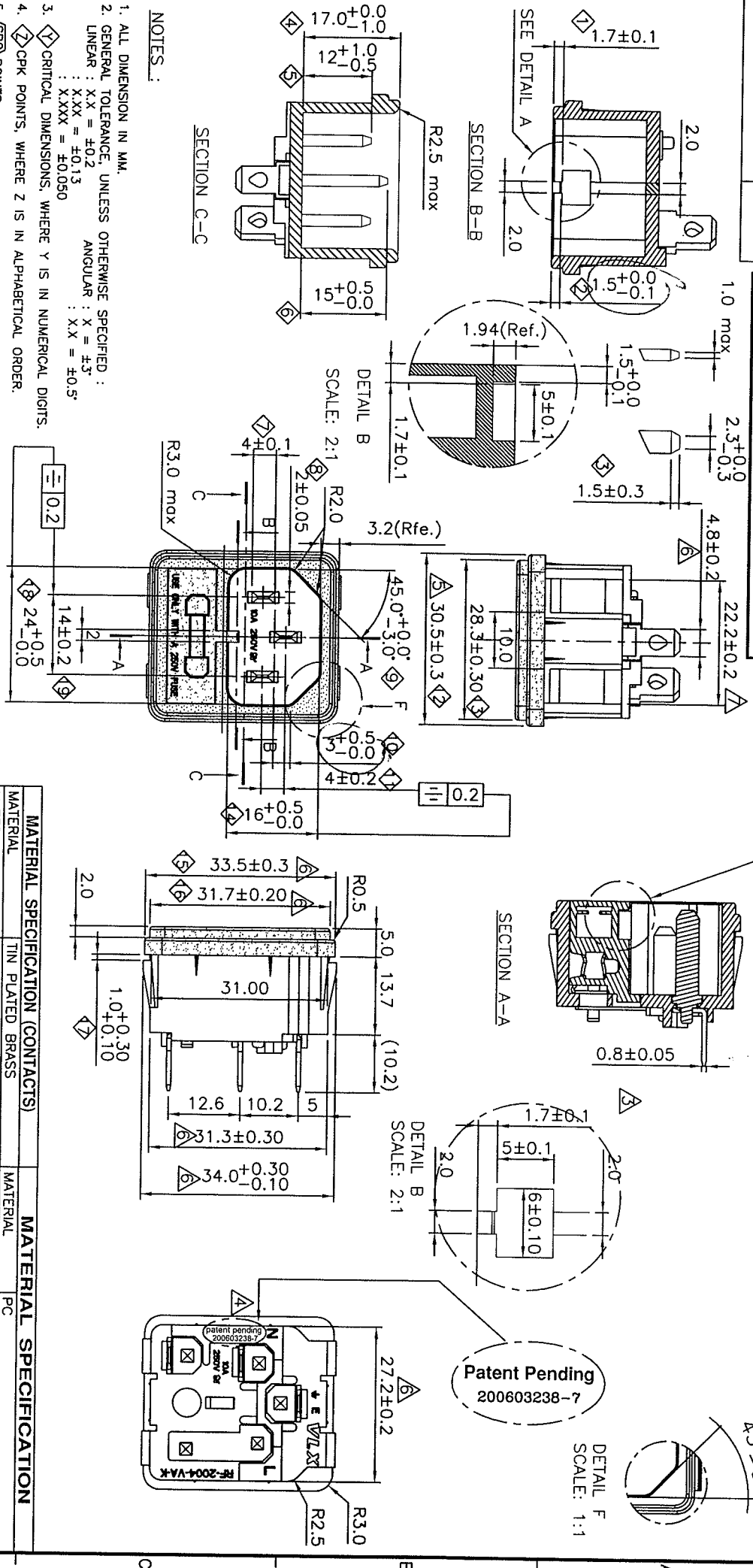


DRAWING NUMBER : **MP-XXXXX**
 REVISION : **7**

ENGINEERING DETAILS



- NOTES :**
1. ALL DIMENSION IN MM.
 2. GENERAL TOLERANCE, UNLESS OTHERWISE SPECIFIED :
 LINEAR : XX = ±0.2
 : XXX = ±0.13
 : XXXX = ±0.050
 ANGULAR : X = ±3°
 : XX = ±0.5°
 3. CRITICAL DIMENSIONS, WHERE Y IS IN NUMERICAL DIGITS.
 4. CRK POINTS, WHERE Z IS IN ALPHABETICAL ORDER.
 5. (SPO) POINTS.
 6. MAX. 0.20MM ALLOWABLE PLASTICS FLASH ALL ROUND.
 7. MAX. 0.05MM ALLOWABLE METALLIC BURR ALL ROUND.
 8. EVERY LOT MUST COME WITH COG DECLARING THE SUPPLIER AND TYPE NUMBER OF THE MATERIAL USED.

| DRAWN : | XIA YX | REV | ECR | BY | DATE | REV | ECR | BY | DATE |
|------------|--------------------|-----|----------|-----|----------|-----|----------|-----|----------|
| RELEASED : | 16/07/06 | 1 | PS025-06 | XIA | 07/09/06 | 5 | PS025-06 | XIA | 06/11/06 |
| CHECKED : | <i>[Signature]</i> | 2 | PS025-06 | XIA | 15/09/06 | 6 | PS025-06 | XIA | 06/11/06 |
| APPROVED : | <i>[Signature]</i> | 3 | PS025-06 | XIA | 21/09/06 | 7 | PS025-06 | XIA | 07/11/06 |
| | | 4 | PS025-06 | XIA | 19/10/06 | | | | |

| MATERIAL SPECIFICATION (CONTACTS) | | MATERIAL SPECIFICATION | |
|-----------------------------------|------------------|------------------------|---------|
| MATERIAL | TIN PLATED BRASS | MATERIAL | PC |
| MATERIAL No. | C2680 | COLOR | BLACK |
| ELONGATION | - | FINISHING | - |
| TEMPERING | - | MATERIAL No. | 6485 |
| TENSILE STRENGTH | 36~45kgf/mm2 | UL LICENSE No. | E41613 |
| HARDNESS VALUE | 1/2H | FLAMMABILITY | UL94V-0 |
| PLATING THICKNESS | XXXX | SUPPLIER | BARER |

TITLE : POWER INLET FUSE HOLDER(PS025-06) RF-2004-VA-K

ITEM NO. : UL/CSA/IEC
FILENAME : F:\DATABASE\ENGRG\ACAD014\COMPONENT\H-XX
SCALE : 1 : 1
PROJ. :
PAGE : 1/1

Volox
 Confidential property of Volox. Information contained herein shall not be disclosed to others, reproduced or used for any other purpose except as authorized in writing by an authorized official of Volox Asia.

Mouser Electronics

Authorized Distributor

Click to View Pricing, Inventory, Delivery & Lifecycle Information:

Volex:

[IN-RF2004V-001](#)