

This Package Includes:

- | | |
|--------------------------------------|-----------------------------|
| 1- 4 PIN power connector | 2- #10 x 1 1/4" wood screws |
| 1- ESP1B, ESP2B and ESP4B faceplates | 2- #10-32 x 1/2" screws |
| 4- Wire nuts | 2- Mounting brackets |
| 5- M5 x 1/2" screws | 2- Spacers |



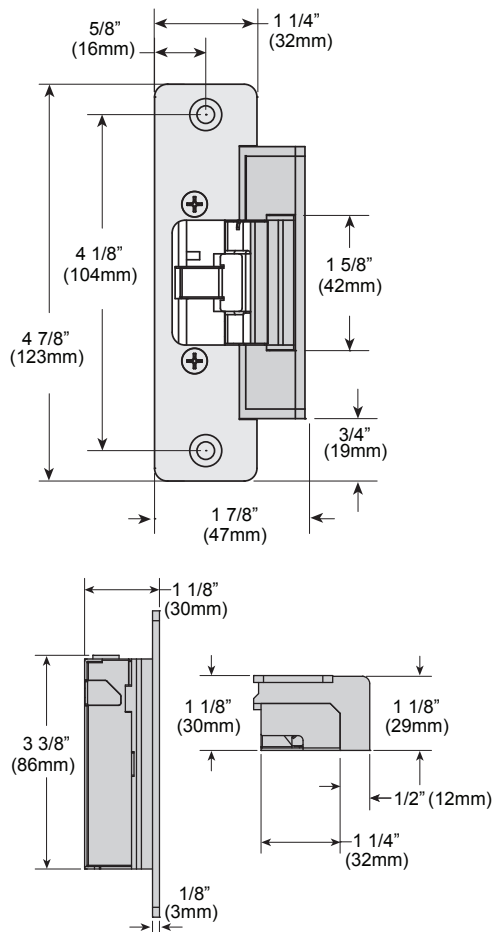
1. Description

Camden CX-ED2079 low profile grade 2 ANSI strike for cylindrical locksets offers the very best strike quality and performance, with three stainless steel faceplates provided. The 'Universal' strike design delivers unparalleled application flexibility, with field selectable voltage, fail safe/fail secure operation and mechanical adjustment of the strike body.

2. Specifications

Voltage	12/24V AC/DC
Current Draw	300mA@12V DC 150mA@24V DC
Static Strength	1,000 Lbs.
Dynamic Strength	50 Ft-Lbs.
Endurance	700,000 Cycles (Factory Tested) 250,000 Cycles (UL Verified)
Mode	Field Selectable Fail Safe/Fail Secure
Mech. Adjustment	Strike Body/Faceplate
Operation	AC-Buzz DC-Silent
Duty	Continuous
Dimensions (Body)	3 3/8" H x 1 7/8" W x 1 1/8" D (86mm x 47mm x 29mm)

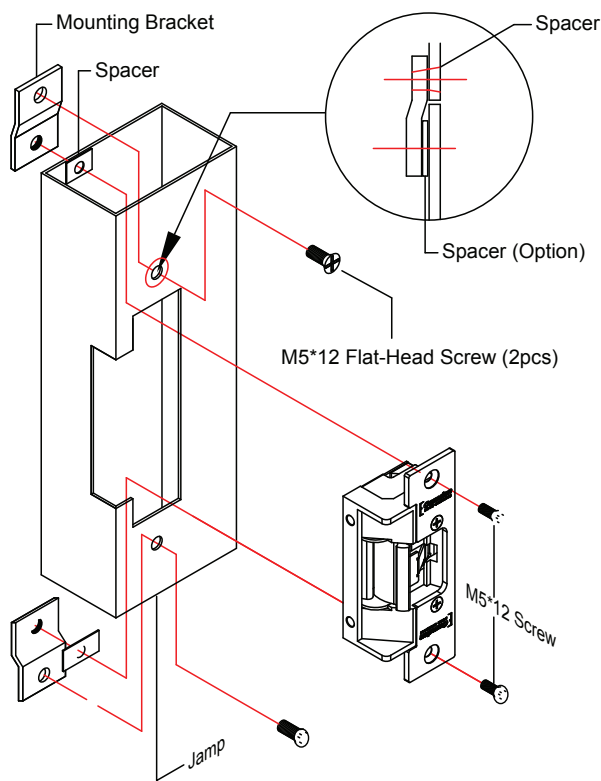
3. Dimensions



4. Installation

1. Prepare the door jamb as per the appropriate drawing.
2. Install mounting brackets to jamb using M5x12 screws and pressed metal nuts. Do not tighten.
3. Spacers are used to assure flush final assembly of faceplate into jamb. Add one or more spacers between jamb and mounting bracket when face plate extends beyond the jamb. When the faceplate sits inside the jamb, spacers must be added between the mounting

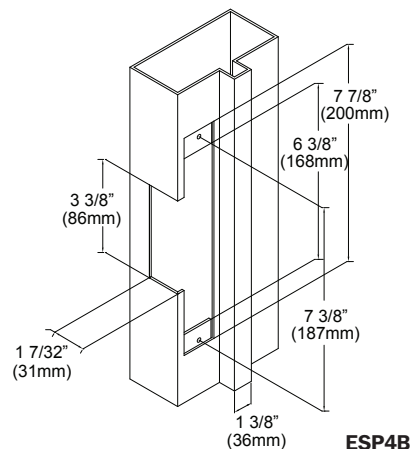
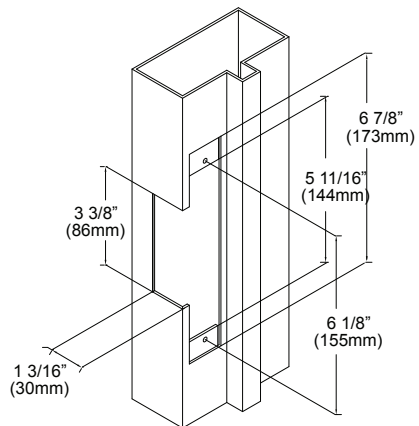
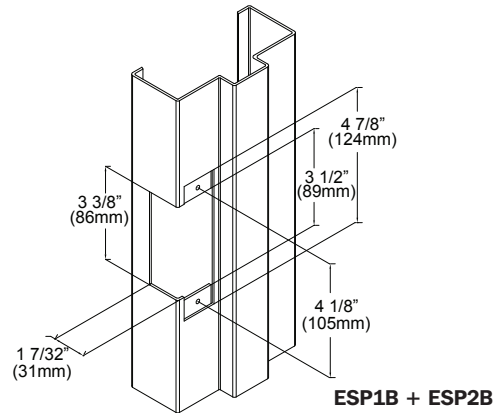
4. Connect wires coming from the low voltage side of the transformer to wires (black) from strike.
5. Install electric strike jamb by attaching with # 10-32 screws and lockwashers.
6. Secure M5x12 screws holding mounting brackets to jamb.



Vertical Centerline

Note: The products are intended to be installed in accordance with the installation wiring diagram and mechanically assembled drawings provided with each product. The local authority having jurisdiction (AHJ) and the National Electric Code, NFPA 70. When installed with a fail secure manner, the local authority shall be consulted with regard to the use of possible panic hardware to allow emergency exit from the secure area.

The electric door strike shall be installed in such a way and in such location as not to impair the operation of an emergency exit or panic hardware mounted on the door.



5. Connections

POWER

12VDC

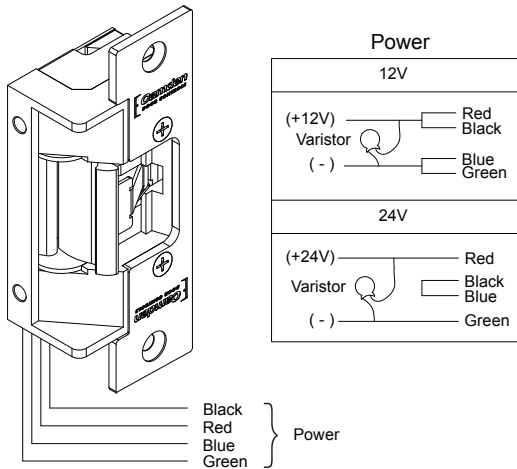
Red/Black: +12V
Blue/Green: Ground

24VDC

Red: +24V
Black/Blue: -
Green: Ground

A varistor is provided to protect/prevent strike from spikes. Connect varistor between input wires.

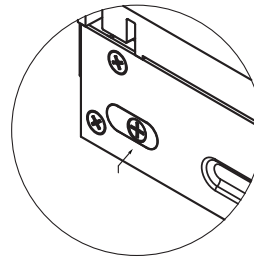
Note: The door strikes are to be powered via a class 2 power limit output from a control panel or power supply that is UL listed to UL Burglar Alarm/Access control standards.



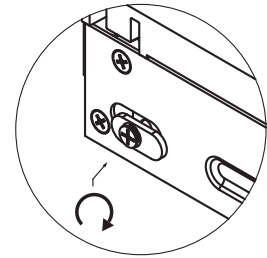
6. Operation

How to modify fail-safe to fail-secure or vice versa.

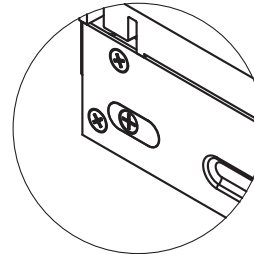
- (1). Loosen the screw as per the product diagram below.
- (2). Rotate the set plate 180° and slide the plate until it is properly seated.
- (3). Tighten the screw.



Fail Safe

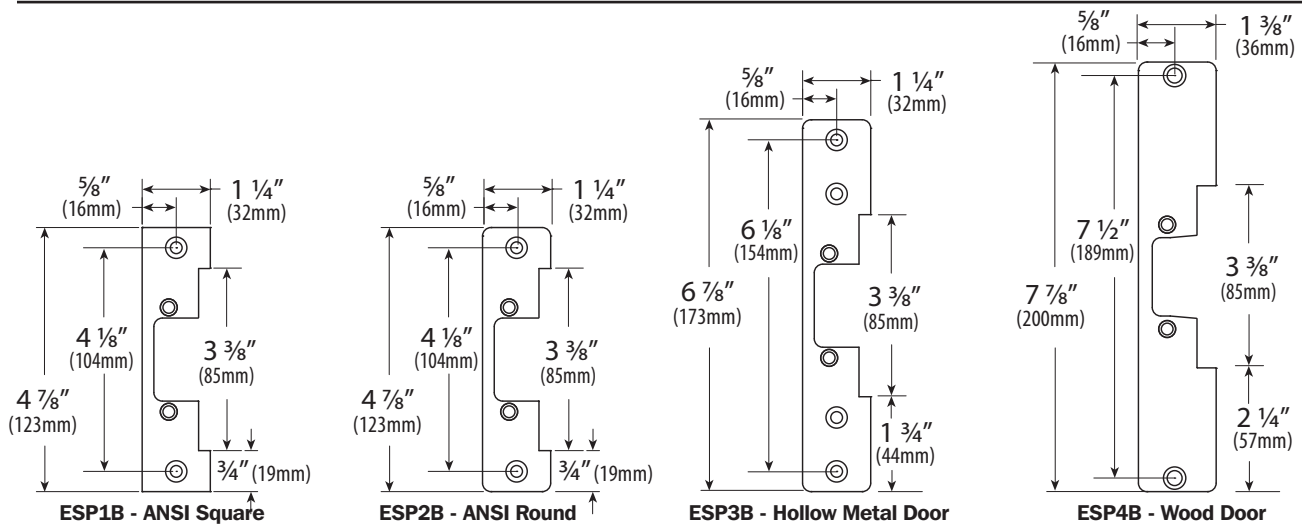


Changing



Fail Secure

7. Faceplates



Push Buttons



Keypads



Strikes



Magnetic Locks



Key Switches



Relays & Timers



Access Control



5502 Timberlea Blvd.,
Mississauga, ON Canada
L4W 2T7

www.camdencontrols.com
Toll Free: 1.877.226.3369

File: CX-ED2079 Designer
Installation Instructions.indd R4
Revision: 21/02/2017
Part No.: 40-82B187