

Blue Line Gen2
Pet Friendly TriTech
Motion Detector
ISC-BDL2-WP12, ISC-BDL2-WP6



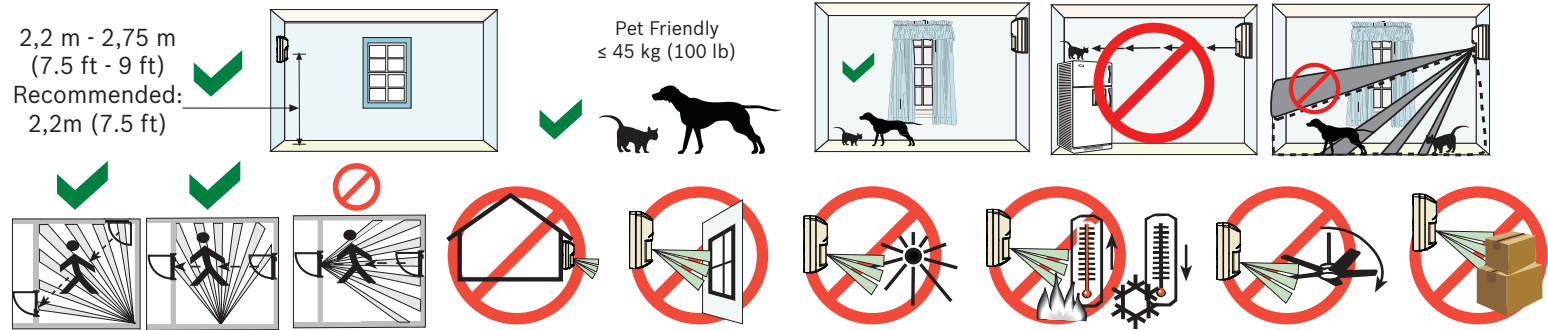
en Installation Guide

This product is intended for use in the following countries within the European Union and in other countries outside of the European Union:

ISC-BDL2-WP12G, ISC-BDL2-WP6G (10.525 GHz): Austria, Belgium, Denmark, Finland, Greece, Italy, Luxembourg, Netherlands, Norway, Portugal, Spain, Sweden

ISC-BDL2-WP12H (10.588 GHz): France, United Kingdom

Optional Brackets:
B328, B338, B335



Changes or modifications not expressly approved by Bosch Security Systems, Inc. can void the user's authority to operate the equipment.

UL/C-UL
Perform Walk Test at least once a year.
Pet immunity not tested by UL/C-UL.
Use only a Listed limited-power source.
The Listed control unit or a Listed burglary power supply must provide 4 hours (40 mAh) of standby power.
Install the unit in accordance with National Electrical Code NFPA 70 and Part 1 of the Canadian Electrical code CSA C22.1.
Adjust the microwave range control, if necessary, to achieve maximum range.

SELV
Connect all wiring to a safety extra-low voltage (SELV) circuit only.
CE EN 50131-2-4 Grade 2 (Non-pet Applications Only)
EN 50130-5 Environmental Class II
IP30 IK04 (EN 60529, EN 62262)

För svensk installationsanvisning se www.boschsecurity.se.

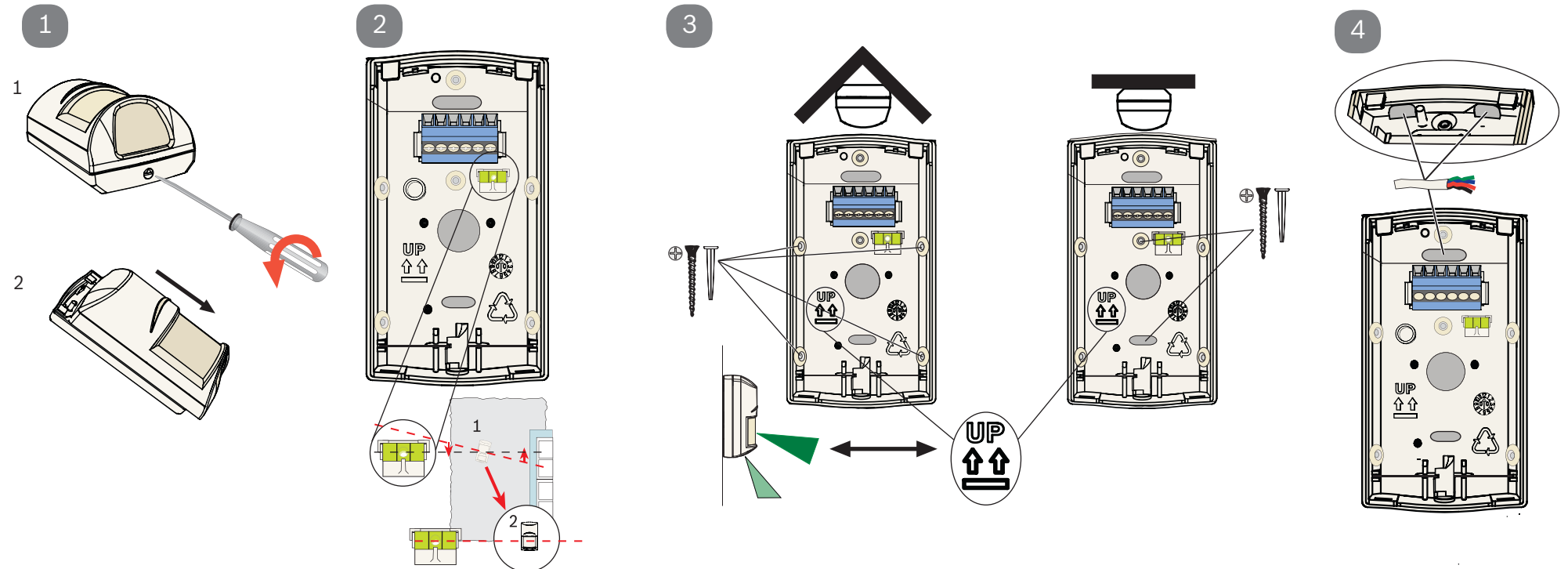
Ligue todas as cablagens apenas a um circuito de segurança de tensão extra baixa (SELV).
Conecte el cableado únicamente a un circuito de seguridad para voltajes muy bajos (SELV).
Alle Drähte sind ohne Ausnahme an Niederspannung anzuschließen.

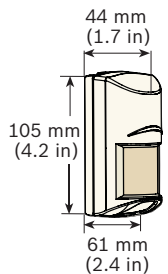
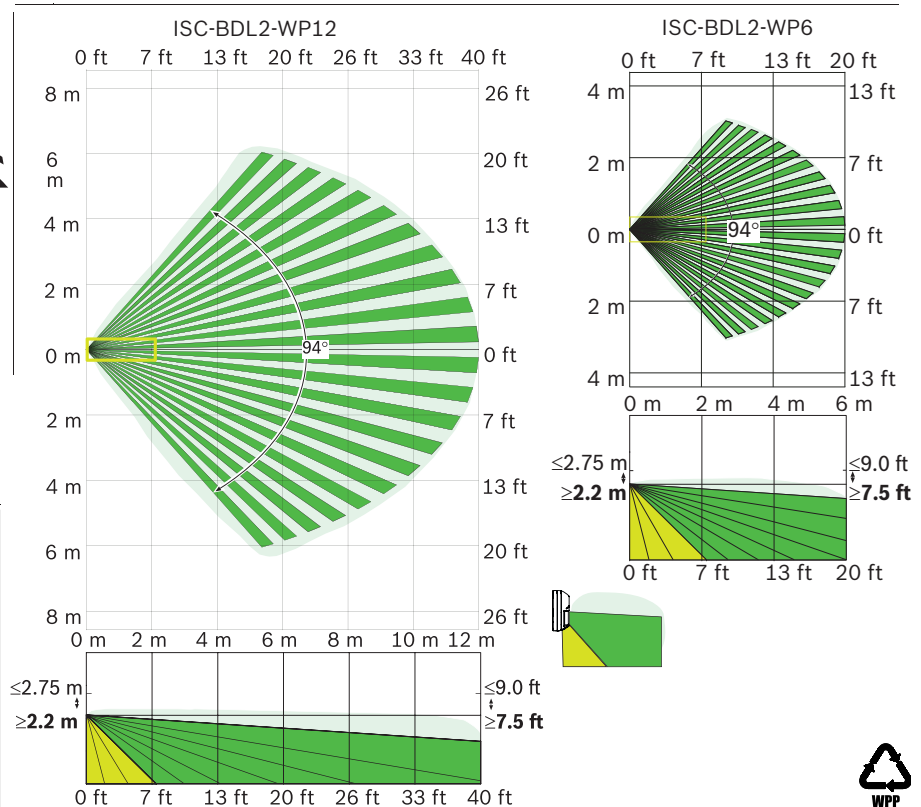
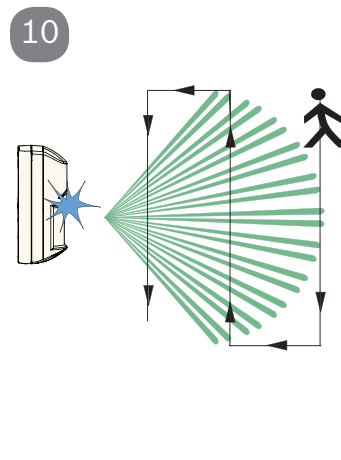
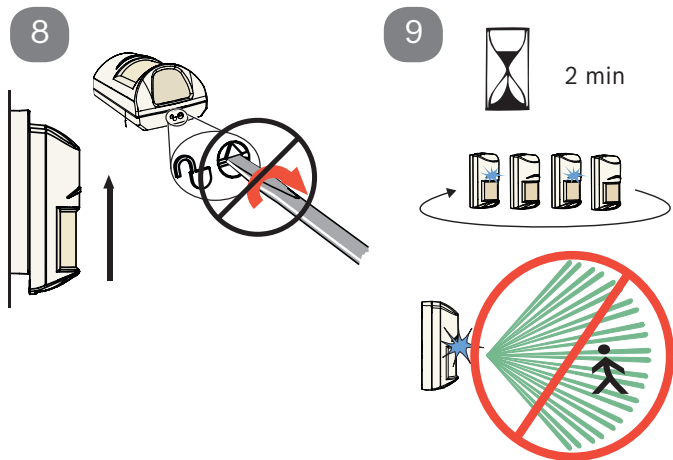
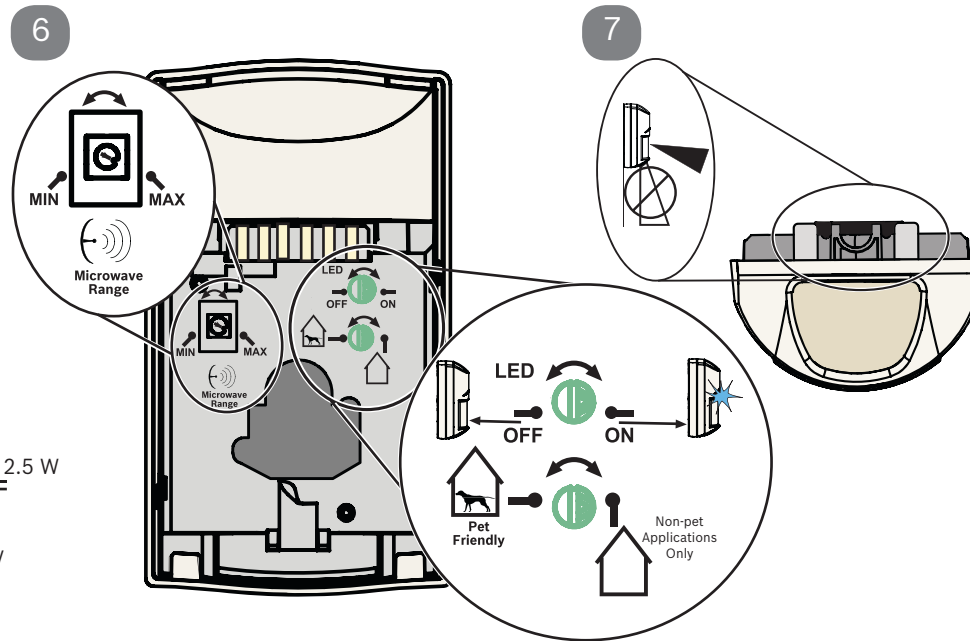
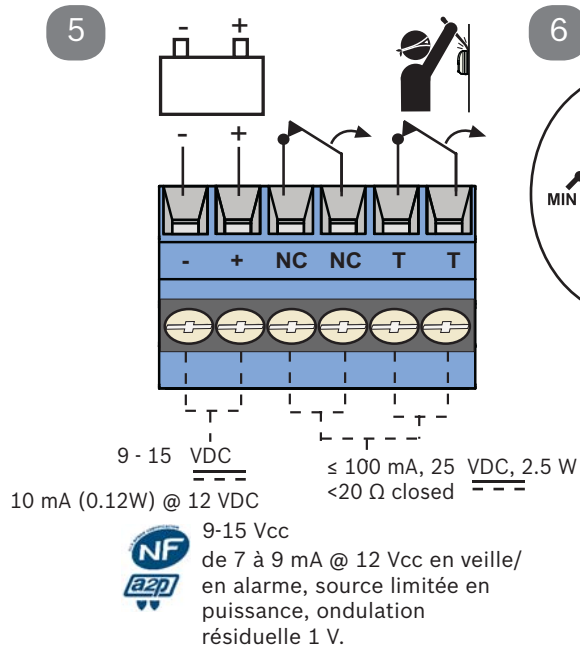
INCERT B-509-0052/b
Certificats NF A2P
2820200003-B0 (WP12H)
2820200003-D0 (WP12G)
2820200003-E0 (WP6G)
2 boucliers NF324 - H58
Autosurveillance à l'ouverture
Immunité champ magnétique
Test sans masque de vision verticale
et sans immunité aux animaux
www.afnor.org
www.cnpp.com

Sluit alle bedrading uitsluitend aan op een circuit met een extra lage veiligheidsspanning.
Prenez soin de connecter tous les câbles à un circuit à très basse tension de sécurité (TBTS).

Collegare tutti i cavi esclusivamente a un circuito SELV (circuito di sicurezza a bassissima tensione).

-30°C to +55°C (-20°F to +130°F)
UL/C-UL Listed installations, the temperature range is 0°C to +49°C (+32°F to +120°F)
Pour les installations certifiées NFA2P, UL/C-UL Listed installations, Température de fonctionnement -10°C à +55°C (-10°C à +55°C)
0 - 95% Relative Humidity (0 - 85% UL/C-UL installations)





? → www.boschsecurity.com

Reading Bosch Security Systems, Inc. Product Date Codes
For Product Date Code information, refer to the
Bosch Security Systems, Inc. Web site at:
<http://www.boschsecurity.com/datecodes/>.



Este equipamento opera em caráter secundário, isto é, não tem direito à proteção contra interferência prejudicial, mesmo de estações do mesmo tipo e não pode causar interferência a sistemas operando em caráter primário.

