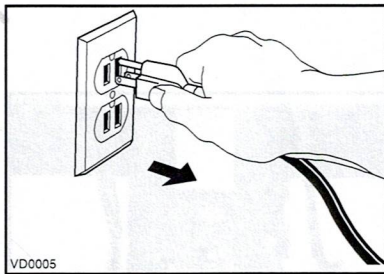


INSTRUCTION SHEET

SUBJECT: ELECTRONIC BOARD REPLACEMENT (PART # 16038)

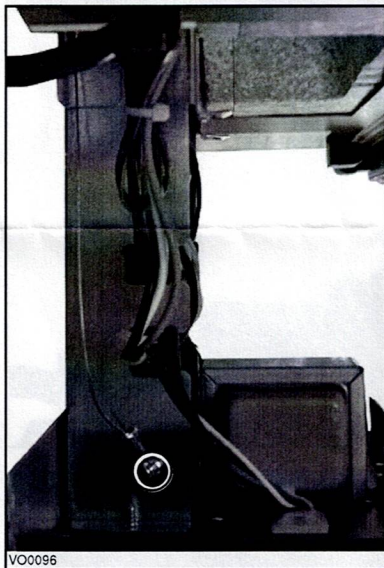
- 1 Unplug the unit.



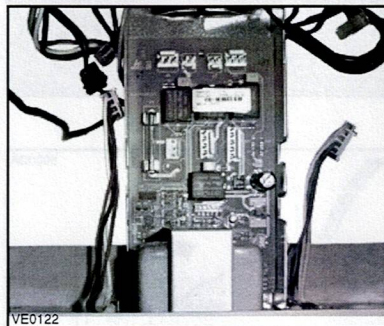
- 2 Using a Robertson #2 or a Phillips #2 screwdriver, remove both screws (as shown beside) and open the electronic compartment.



- 3 Using a Robertson #2 or a Phillips #2 screwdriver, remove the screw retaining the retention wire, located on the left side of the electronic compartment.



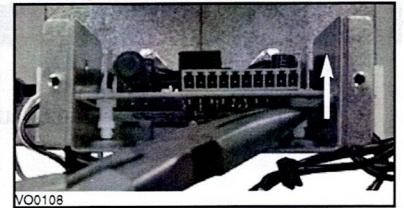
- 4 Unplug all the connectors from the electronic board and detach all the grommets from the electronic board frame (2 per sides).



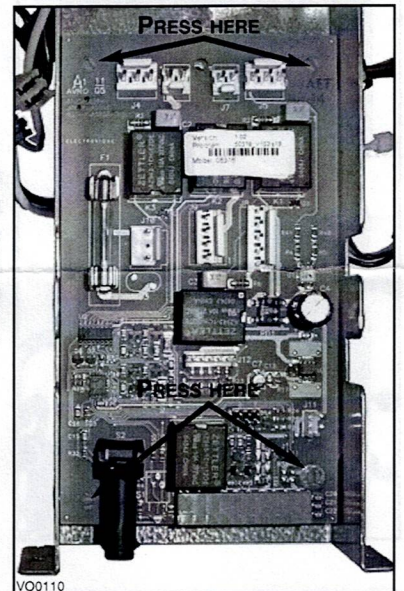
- 5 Using a Robertson #2 or a Phillips #2 screwdriver, remove both lower screws (as shown beside) and remove the electronic compartment cover.



- 6 Using a long nose pliers, lift all electronic board spacers to disengage them from the electronic compartment. Remove the defective electronic board.



- 7 Install the new electronic board. Press on all 4 spacers until they are engaged in the electronic compartment.



- 8 Finalize the installation by reversing steps 5 to 1.

CAUTION

Be careful when plugging back the capacitors connectors to the new electronic board. The left capacitor must be plugged to J7 connector and the right capacitor to J6 connector.



7 72371 08681 4